

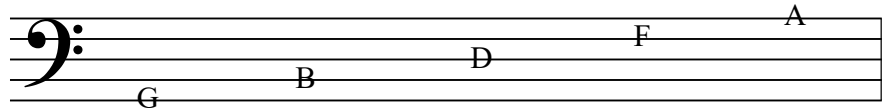
Bass Clef

A Clef is a symbol at the beginning of the staff that assigns letter names to the individual lines and spaces of the staff. A Bass Clef is pictured here:



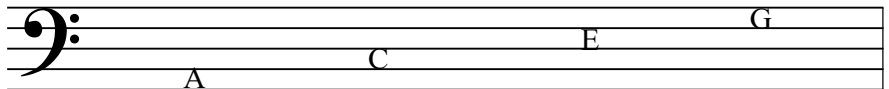
Bass clef indicates that notes will be in a lower pitch range. Notice how the bass clef looks sort of like the letter F. In fact, this clef is also referred to as F Clef because the two dots surround the 4th line of the staff. If we had a note on this line, it would be called F.

If you see a bass clef in your music, your lines will be named as follows:



If you have a note that falls on one of these lines, it will be called the letter name of that line. A good way to remember the names of the lines is **G**randpa's **B**elt **D**oesn't **F**it **A**nymore.

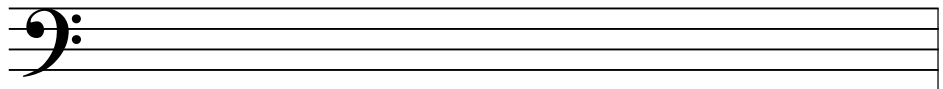
The spaces also have names in bass clef. The are:



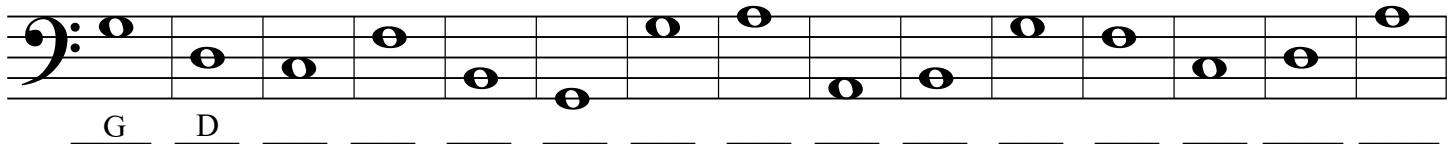
If you have a note that falls on one of these spaces, it will be called the letter name of that space. A good way to remember the names of the spaces is **A**ll **C**ows **E**at **G**rass.

Student Assignment:

1. Practice drawing two more bass clef signs like this one:



2. Using the names of the lines and spaces above, name each note on the staff. The first two are done for you.



3. Each set of notes spells a word. Write that word in the blank. The first one is done for you.

