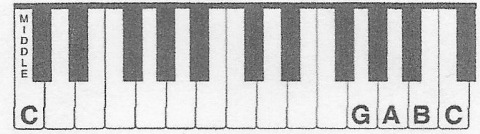
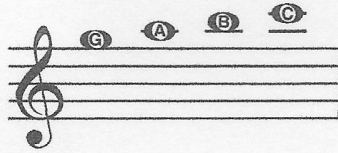


Ledger Lines

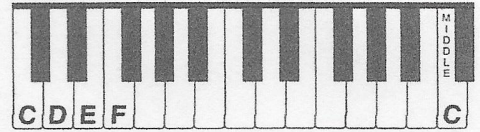
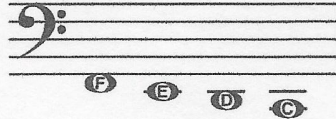
Ledger Lines

Low and High Notes

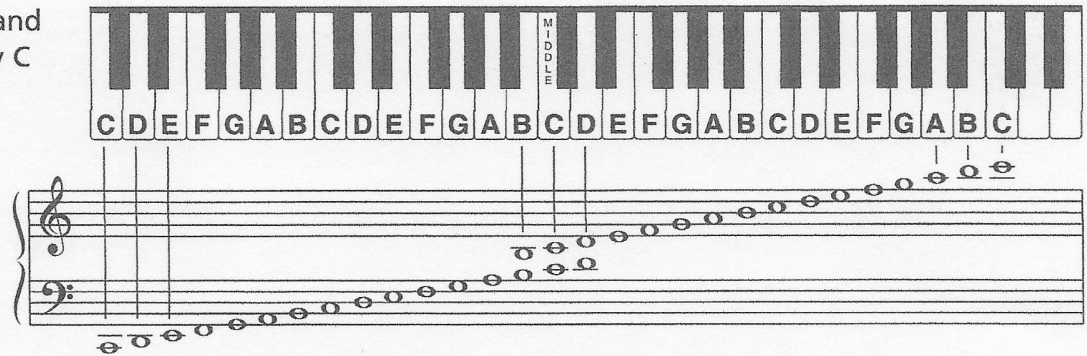
More than one ledger line may be added to extend the lower and upper ranges of the grand staff. The next higher notes of the treble staff are G, A, B and C.



The next lower notes of the bass staff are F, E, D and C.



All the notes on the grand staff from bass clef Low C to treble clef High C:



Look at the Grand Staff below. In these examples notice that notes can be written in several different locations, but still have the same musical letter name. Identify the name of the notes in each example.

①	②	③	④
e			
C	—	—	—

⑤	⑥	⑦
	e	e
—	—	—