

# Seaside Symphonic Band Warm Up

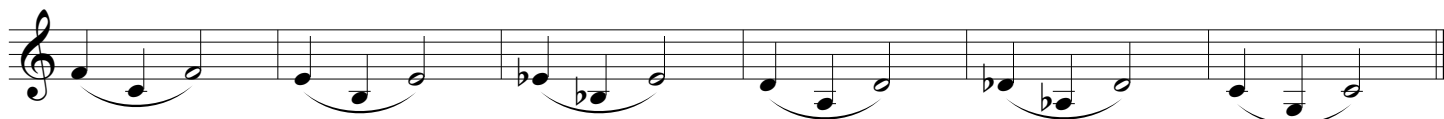
F Horn

(2017)

## Descending Half-Steps



## 8-5-1



## Lip Slur #1



## Lip Slur #2



## Lip Slur #3



Concert Scales

Musical notation for Concert Scales. The first staff shows a treble clef and a series of eighth notes: C4, D4, E4, F4, G4, A4, B4, C5, B4, A4, G4, F4, E4, D4, C4. The second staff shows a series of sixteenth notes: C4, D4, E4, F4, G4, A4, B4, C5, B4, A4, G4, F4, E4, D4, C4. The third staff shows a treble clef and a series of eighth notes: C4, D4, E4, F4, G4, A4, B4, C5, B4, A4, G4, F4, E4, D4, C4.

Repeat: C Concert, Eb Concert, F Concert, G Concert, and Ab Concert

F Concert Chromatic Scale

Musical notation for F Concert Chromatic Scale. The first staff shows a treble clef and a series of chromatic eighth notes: F4, F#4, G4, G#4, A4, A#4, B4, B#4, C5, B4, A4, G4, F4. The second staff shows a treble clef and a series of chromatic eighth notes: F4, E4, D4, C4, B3, A3, G3, F3, E3, D3, C3, B2, A2, G2, F2.

#125 Velocity and Articulation Study (St. Jacome)

Musical notation for #125 Velocity and Articulation Study (St. Jacome). The piece is in 2/4 time and features six staves of eighth notes. The first staff starts with a treble clef and a key signature of one flat (Bb). The second staff has a boxed 'A' at the beginning. The third staff has a boxed 'B' at the beginning. The fourth and fifth staves continue the eighth-note pattern. The sixth staff ends with a double bar line and a fermata.