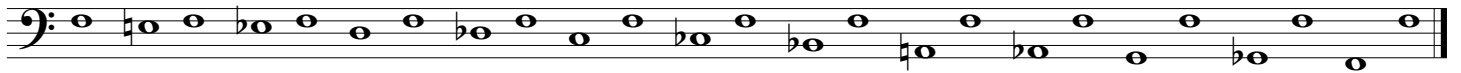


Seaside Symphonic Band Warm Up

Trombone

(2017)

Descending Half-Steps



8-5-1



Lip Slur #1



Lip Slur #2



Lip Slur #3



Concert Scales

The first section contains two staves of music. The first staff shows a standard concert scale in bass clef, starting on B-flat and ending on B-flat. The second staff shows a sixteenth-note scale in bass clef, starting on B-flat and ending on B-flat.

Repeat: C Concert, Eb Concert, F Concert, G Concert, and Ab Concert

F Concert Chromatic Scale

The second section contains two staves of music. The first staff shows an F concert chromatic scale in bass clef, starting on F and ending on F. The second staff shows the reverse chromatic scale in bass clef, starting on F and ending on F.

#125 Velocity and Articulation Study (St. Jacome)

The third section contains five staves of music. The first two staves show the beginning of the study. The third staff is marked with a box containing the letter 'A'. The fourth staff is marked with a box containing the letter 'B'. The fifth staff shows the end of the study.