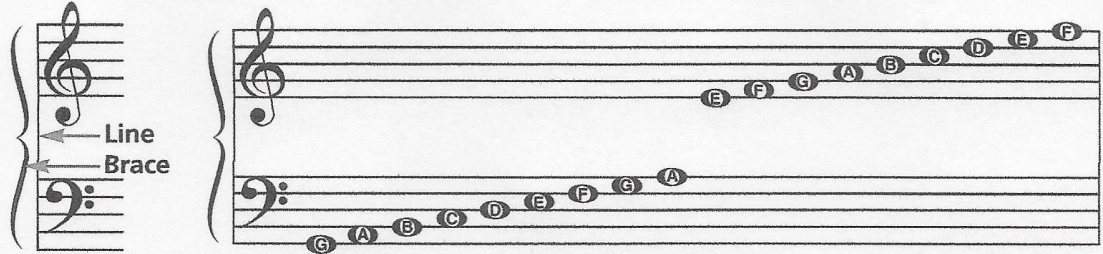


The Grand Staff and Ledger Lines

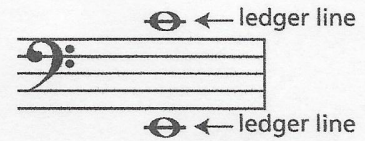
The Grand Staff

When the bass and treble staves are connected by a brace and a line, they combine to form the GRAND STAFF.

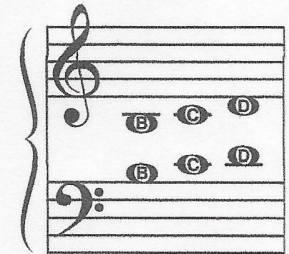
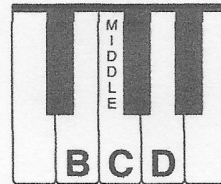
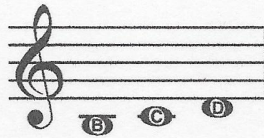
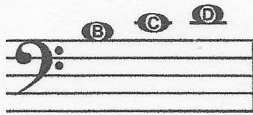


Ledger Lines — The Middle Notes

LEDGER LINES are short lines which are added to extend the range of the staff when the notes are too low or too high to be written on the staff.



The notes in the middle range of the grand staff are B, C and D. They can be written on ledger lines in both the bass and treble staves.



These notes are written differently but sound the same.

Look at the clef sign of the staff where the notes appear. For each Grand Staff example identify the name of the notes. The first one has been done for you. (In each example both notes have the same letter name.)

| | | | |
|---|---|---|---|
| ① | ② | ③ | ④ |
| | | | |
| C | — | — | — |

| | | | |
|---|---|---|---|
| ⑤ | ⑥ | ⑦ | ⑧ |
| | | | |
| — | — | — | — |