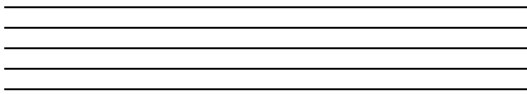
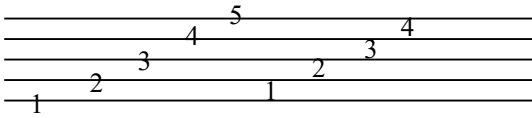


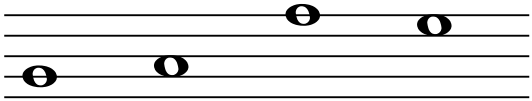
Reading Music: The Staff



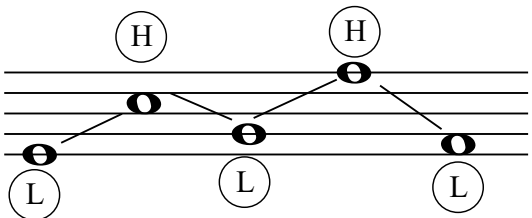
A **Staff** is a set of lines and spaces on which music is written.



The lines and spaces between can be numbered from the bottom (lowest) to the top (highest).



A **Note** is a symbol used to represent the duration and pitch of the sound. Notes can appear on the lines and the spaces of the staff. These notes pictured are called whole notes.



The higher a note is on the staff, the higher it sounds.
The lower a note of the staff, the lower it sounds.

Student Assignment:

1. Draw a staff by connecting the dots.
Then, number the lines low to high
followed by the spaces low to high.
See middle example above.

⋮
⋮
⋮

⋮
⋮
⋮

2. On the staff below label by number which line or space the note falls on. The first two examples are done for you.

<u>Space 2</u>	<u>Line 4</u>	_____	_____	_____	_____	_____	_____

3. On the line below, indicate which note is higher by naming the line or space it is on. The first two are done for you.

<u>Space 3</u>	<u>Line 5</u>	_____	_____	_____	_____	_____